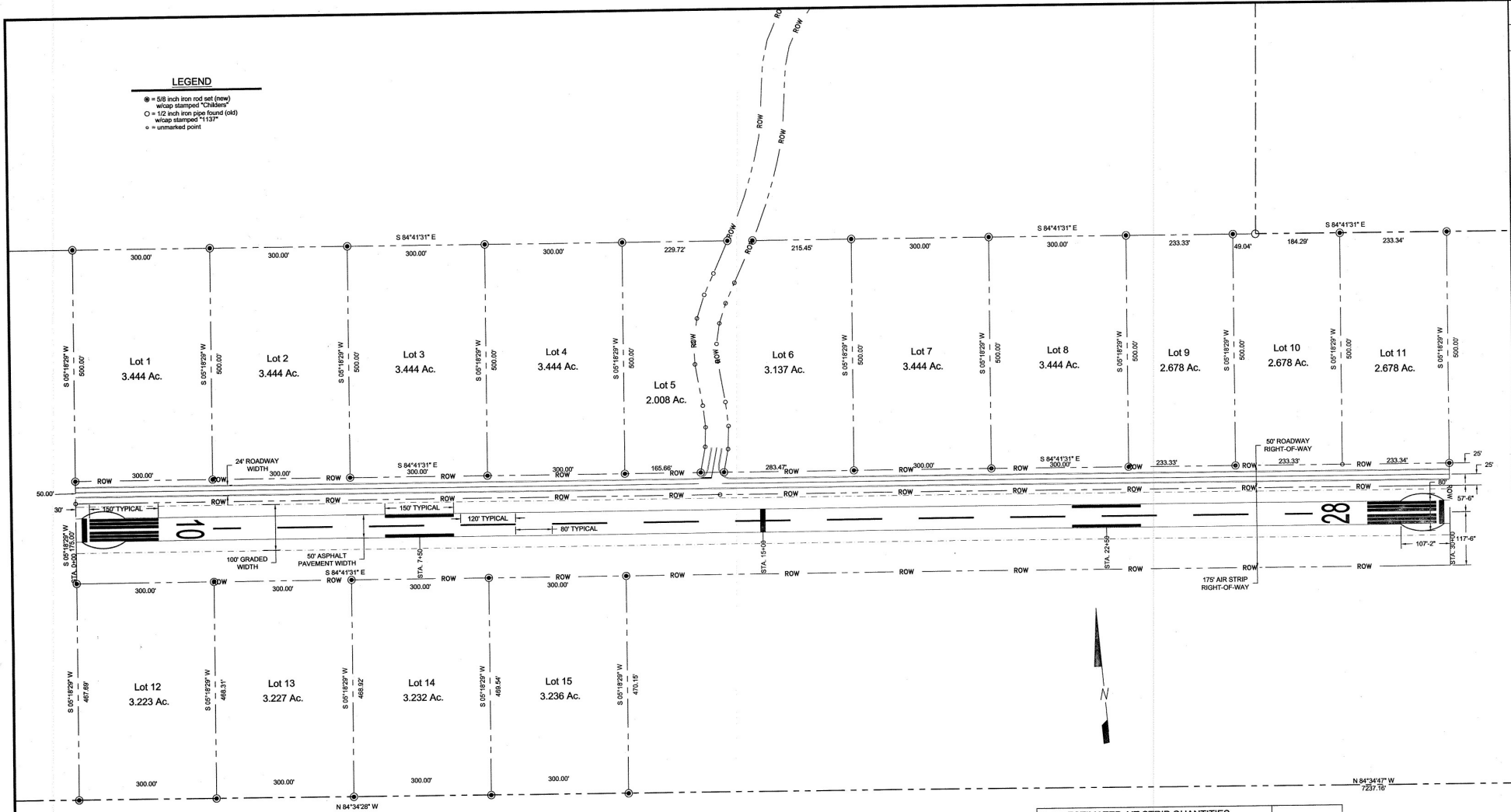


LEGEND

- ⊙ = 5/8 inch iron rod set (row) w/loop stamped "Childs"
- = 1/2 inch iron pipe found (old) w/loop stamped "1137"
- = unmarked point



NOTES:

1. THE PROPOSED AIR STRIP HAS NOT BEEN DESIGNED TO MEET FAA REQUIREMENTS. THE AIR STRIP WAS DESIGNED WITH FAA REQUIREMENTS AS A REFERENCE ONLY. THIS AIR STRIP DESIGN HAS NOT BEEN SUBMITTED TO, REVIEW BY, OR APPROVED BY THE FAA OR THE TENNESSEE AERONAUTICS DIVISION.
2. THE AIR STRIP DESIGN WAS COMPLETED BY PROFESSIONAL ENGINEERING SERVICES, INC. FOR GREENWELL DEVELOPMENT, AND IS ASSUMED TO BE OPERATED BY THE STANDARDS ESTABLISHED BY THE DEVELOPERS / PROPERTY OWNERS AFTER CONSTRUCTION HAS BEEN COMPLETED.
3. THE QUALITY OF THE EXISTING SUBGRADE CONDITIONS, CUT AND FILL AREAS, CANNOT BE GUARANTEED OR CERTIFIED BY THE DESIGN ENGINEER. EXCAVATING AND FILLING ACTIVITY WAS PERFORMED PRIOR TO DESIGN. PROFESSIONAL ENGINEERING SERVICES, INC DOES NOT ASSUME RESPONSIBILITY FOR CONSTRUCTION QUALITY ASSURANCE.
4. THE SIZING AND INTEGRITY OF THE EXISTING DRAINAGE ROADWAY CANNOT BE GUARANTEED OR CERTIFIED BY THE DESIGN ENGINEER SINCE THE CULVERT INSTALLATIONS WERE NOT PERFORMED UNDER THE OBSERVATION AND INSPECTION OF THE DESIGN ENGINEER.

5. GRADE STAKING AND BLUE TOPPING OF THE AIR STRIP IS RECOMMENDED BY THE DESIGN ENGINEER AFTER THE AIR STRIP DESIGN HAS BEEN COMPLETED AND ACCEPTED BY THE DEVELOPER. THIS WILL ENSURE THAT THE AIR STRIP HAS BEEN BUILT TO THE DESIGNED GRADES.
6. THE AIR STRIP DESIGN ENGINEER IS NOT RESPONSIBLE FOR THE DEVELOPMENT OR IMPLEMENTATION OF A STORM WATER POLLUTION PREVENTION PLAN FOR THE PROPOSED GRADING ACTIVITY. IT IS UNDERSTOOD THAT THIS PROPERTY HAS PREVIOUSLY OBTAINED COVERAGE UNDER TDEC'S GENERAL CONSTRUCTION PERMIT FOR LAND DISTURBANCE ACTIVITY. THE UPDATING OF THE SWPPP SHALL BE THE DEVELOPERS RESPONSIBILITY.
7. THE ROADWAY GRADES ARE SHOWN ON CROSS SECTIONS FROM STATION 0+00 TO STATION 30+00 TO INSURE PROPER DRAINAGE THROUGHOUT THE PROJECT.

ESTIMATED AIR STRIP QUANTITIES		
DESCRIPTION	UNITS	QUANTITY
UNCLASSIFIED EXCAVATION (AIR STRIP & ROADWAY)	C.Y.	22,032
FURNISH & SPREAD TOPSOIL	C.Y.	4,716
MINERAL AGGREGATE (Type A Base Grading D) AIR STRIP	TON	7,723
ASPHALT CONCRETE MIX, GRADING "B"	TON	2,902
ASPHALT CONCRETE MIX, GRADING "E"	TON	1,884
BITUMINOUS MATERIAL FOR PRIME COAT (P.C)	TON	26
AGGREGATE FOR COVER MATERIAL (P.C)	TON	103
BITUMINOUS MATERIAL FOR TACK COAT (TC)	TON	1.5
15" HDPE N-12 PIPE CULVERT	L.F.	213
18" HDPE N-12 PIPE CULVERT	L.F.	60
MINERAL AGGREGATE (Type A Base Grading D) ROADWAY	TON	2,707
STRIPING	LUMP SUM	1



PROFESSIONAL ENGINEERING SERVICES, INC.
 1000 W. MAIN ST., SUITE 200, MEMPHIS, TN 38103
 (901) 525-1137

Professional Engineering Services, Inc.
 Registered Professional Engineer
 License No. 7242/2007

NO. DATE DESCRIPTION BY C.O.D.

PROPOSED - LAYOUT

GREENWELL DEVELOPMENT
 PINEY CREEK AIR PARK
 GRUNDY COUNTY, TENNESSEE

SCALE: 1" = 100'

DATE: 7/24/2007

DESIGNED BY: R.G.R.

CHECKED BY: K.E.H.

PROJECT NO.: 3197/01

SHEET NO.: 4 OF 22

THIS DRAWING IS NOT TO BE COPIED OR REPRODUCED WITHOUT WRITTEN PERMISSION FROM PROFESSIONAL ENGINEERING SERVICES, INC.

8-28-2007